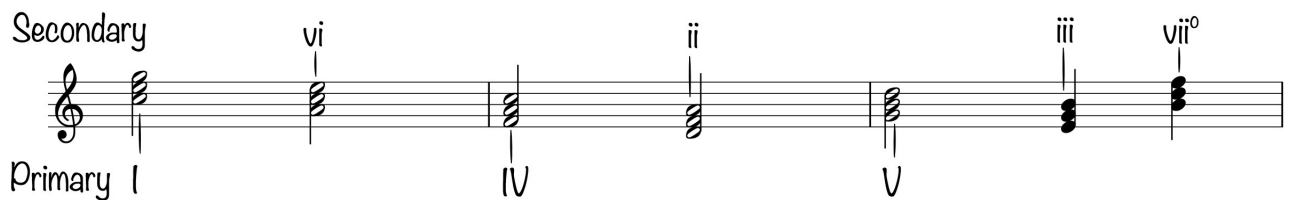


SECONDARY TRIADS

The secondary triads are ii, iii, vi, and vii^o. They are called the supertonic, mediant, submediant and leading tone.

- I
- ii *Supertonic*
- iii *Mediant*
- IV
- V
- vi *Submediant*
- vii^o *Leading Tone*

Each secondary triad is related to a primary triad through two common tones and because of that they can substitute for the primary triads.



You can substitute secondary triads for the following primary triads:

- vi for I
- ii for IV
- iii or vii^o for V